

## 1 Congratulations! ... Nice Choice! Thank You!

You are now the owner of a Bertucci® Ultimate Field Watch.™ You have something special because every Bertucci® Watch has been carefully designed and made from only the best materials, and loaded with premium features. Additionally, Bertucci® Watches are backed up with an industry leading 3 year warranty. This is the basis of our Promise of Performance™ to you. Please carefully read this manual to familiarize yourself with your Bertucci® Watch. Please contact us with any questions you may have.

### What is a Bertucci®?... the Ultimate Field Watch™

You see one... it looks better... it's well done, and it's just right.

You feel one... it feels different... well-built, something you know will last, no short cuts or compromises. You sense the authenticity, experience and passion that went into it.

You try one on... the critical test... fits your wrist well, and more comfortable, feels like it's meant to be there.

Well... that's a Bertucci® Ultimate Field Watch™.

### Our Vision...

Bertucci® started with a vision to make the best field watches... a passion to make it a reality... and some ideas on how to achieve this. This includes superior design & materials... and, a commitment to quality and performance. Our products then naturally possess an authenticity like no other.

\*Manufactured using one of more of the following U.S. Pat. No: 488388, 488075, 488724, 582296, 609586, 645766, 7832605, 8,960,510,B2 and other patents pending.

## 3 Specifications & Functions:

Accuracy:	+/- 20 seconds per month
Battery Life:	3 years of continuous use assuming chronograph is used 1 hour per day. When not in use pull out crown to conserve battery, extending battery life.
Battery Type:	SR920SW / 371 cell
Movement:	USA assembled, caliber 24C quartz, 5 jewel, all-metal, repairable.
Time:	<ul style="list-style-type: none"><li>• Three center hands: hours, minutes, seconds display</li><li>• 24 hour sub dial for military time display of same time as three center hand display, and showing AM-PM</li></ul>
Chronograph:	<ul style="list-style-type: none"><li>• 1 hour run time and stop</li><li>• 60 minutes sub dial</li><li>• 60 seconds sub dial</li><li>• Split / elapsed time feature</li><li>• Measuring two competitors 1st and 2nd place finish feature</li><li>• Two button control at 2 and 4 position</li></ul>
Case:	Solid titanium 42 mm, screw down crown & case back, 200 M water resistance, crown & two button operation.
Crystal:	R-Type Sapphire

## 4 Time Setting Instructions:

(Note: A plastic crown clip may be on setting crown - please carefully remove.)

- 1 Turn crown counter clock-wise to unscrew (see fig.1 to the right). The crown is completely unscrewed when it turns freely. (Note: Crown may already in the out position or unscrewed, with second hand stopped, go to step 2.)
- 2 Gently and carefully pull crown out to stop second hand. Do not pull too hard (fig. 2).
- 3 Turn crown clock-wise or counter clock-wise, advancing the hour and minute hands to set the desired time (fig. 3). Please Note: The crown setting will also move the 24 hour sub dial at the 3 position to match the center hour hand.
- 4 Push crown in to re-start second hand or start/stop to set exact seconds. (fig. 4).
- 5 Push in again and turn crown clock-wise simultaneously to engage threads. Continue to turn clockwise to firmly screw/re-thread down crown. (A screwed down crown will protect crown and prevent water damage to the movement.) Do not over tighten (fig. 5).

## 5 Chronograph Operation:

The chronograph (stopwatch) function is a two button operation that will measure and display elapsed time up to 60 minutes to the second.



### Measuring Elapsed Time:

Elapsed time is show on the two sub dials. Minutes are displayed on the sub dial at 9 position, with the seconds on the sub-dial located at 6 position.

- Press A to start.
- Press A to stop to measure time elapsed.
- Press and hold B to reset.

Note 1) If chronograph hands do not index at 60 mark when resetting, refer to "Re-calibrating the chronograph" section.

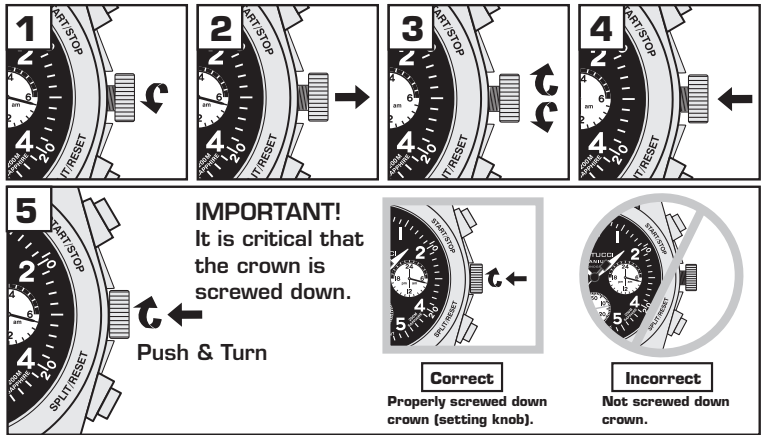
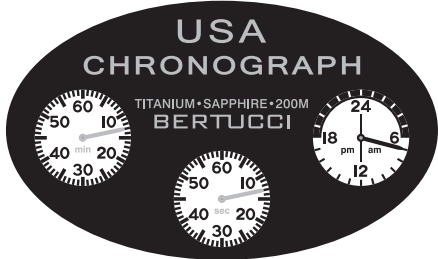
Note 2) Crown must be pushed in to operate chronograph.

### Measuring Split Times:

Split time is measuring intervals within a timing event.

- Press A to start.
- At the desired interval, press B to measure a split time interval (chronograph is still running ), and press B again to go back to overall timing (sub dial hands will advance quickly to show total elapsed time). This operation can be repeated.
- Press A to stop measuring time elapsed.
- Press and hold B to reset.

## 2 Durability by Design®



### Measuring two competitors - 1st and 2nd place finish:

- Press A to start.
- Press B to record first place finish.
- Press A to record second place finish.
- Press B to see second place finish, hands will quickly advance.
- Press and hold B to reset or Press A to continue timing.

### Re-calibrating the chronograph:

After resetting the chronograph, if the hands do not align to 60 seconds or 60 minutes (indexing at 60 mark) this can be corrected by following this procedure:

- Unscrew the crown. Pull the crown setting knob out to the off position, until the large center second hand stops.
- Press and hold A to advance the sub minute at 9 position. Press and release A to increment by minutes until minute hand on sub dial is perfectly indexed at the 60 mark.
- Press and hold B to advance the sub second at 6 position. Press and release to increment by seconds until second hand on sub dial is perfectly indexed at the 60 mark.
- Push crown in, reset time, re-thread / screw down crown.

(over)



## 6 Water Resistance:

Bertucci® Watches are engineered to withstand water pressure to 86, 160, or 320 P.S.I.A. (equals immersion to 50 meters/164 feet, 100 meters/328 feet or 200 meters/656 feet below sea level) if crown is pushed in or screwed down. See case back and/or dial for the water resistance of your watch.

1. Never adjust crown (setting knob) or push buttons when watch is wet or submerged in water.
2. Never wear the watch unless the crown is completely screwed down or pushed in.
3. The watch is water resistant only as long as crystal, crown, buttons and case are intact and undamaged.
4. Your Bertucci® Watch has been designed to be worn during activities in which the watch will be exposed to water and submersion in water. However, the watch is not a professional diver watch and should not be used for diving.

## 8 Care for your Bertucci® Watch:

1. We recommend rinsing your watch and band with fresh water after exposure to salt water, chlorinated water, chemicals or soil loads.
2. Never adjust crown (setting knob), or use buttons when watch is wet or submerged in water
3. Keep watch clean and free of debris. Clean using dish detergent & warm water with a soft brush, keep crown (setting knob) screwed down or pushed in when cleaning.
4. If leather band (if equipped with) is saturated with water remove band from watch and place on edge (or hang from buckle) and allow to air dry overnight. Clean with saddle soap or Murphy's Vegetable Oil Soap. Dry overnight, and apply leather conditioner, we offer this on our website.
5. If nylon band (if equipped with) develops loose threads, fuzz, or frays, carefully singe them with a lighter or match for a second, then rinse with water. Clean with warm water and dish detergent.
6. Replace band if excessively worn, see bertucciwatchbands.com. See **7**
7. If watch has stopped, bring it to a local professional jeweler for battery replacement / check. The battery can also be replaced by sending to Bertucci®. (see website bertucciwatches.com). See **9**
8. Do not expose your watch to intense magnetic fields such as loudspeakers and other electromagnetic devices.
9. When setting your watch, handle the crown (setting knob) gently as this is a precision device.
10. Do not subject your watch to severe impact, avoid dropping.
11. When watch is not in use for extended time, pull crown out to stop watch in order to conserve battery life.

## 10 Warranty: Our Promise Of Performance™

Every Bertucci® Watch is carefully designed, manufactured and inspected to ensure it meets our Promise of Performance™ to you. This is backed up by a 3 year warranty. In the event of a malfunction, please follow these steps.

- Step 1** Determine whether your watch is in warranty. If your watch is in warranty, please follow the remaining steps. If it is NOT in warranty, please refer to our Repair program **12** below and/or our web site: bertucciwatches.com
- Step 2** Determine whether your watch has been abused. If not abused, please follow the remaining steps. If the watch is abused please refer to our Repair program **12** below and/or our web site.
- Step 3** Please have the battery checked by a local professional jeweler or consider our Battery & Band™ replacement program in **9** and our web site. Most malfunctions are simply battery related. If the battery is good, and watch is still not functioning correctly, please follow next Step 4.
- Step 4** Please return the defective watch (just the watch head, remove the band) to the retail dealer or send to us for exchange or repair. Please use the Warranty Form (PDF download available on our web site: bertucciwatches.com) or include a note with the same information.

Send the watch for warranty to:

**BCS**  
**c/o Warranty Dept.**  
**P.O. Box 7920**  
**Gurnee, IL 60031 USA**



QR code to go to our warranty info page on our site from your device.



## 12 Repair Information:

We offer complete repair service to keep your Bertucci® Watch in top performing condition.

**OUT OF WARRANTY REPAIR SERVICE:** If your watch requires repair service, we can run a diagnostic on the watch to determine the issue and contact you with the repair estimate. Should your watch be out of warranty (more than 3 years old), damaged severely, deemed overly abused, or water damaged as a result of not screwing the crown down or pushing in, we offer our repair service. The way it works is as follows – Send us your damaged watch (remove the band) to the BCS address below, we will refurbish, re-certify, clean, install new band and battery, and a 1 year service warranty will be in effect.

Send the watch for repair to:

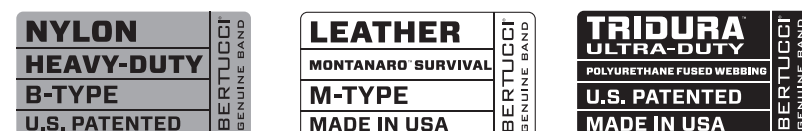
**BCS**  
**c/o Repair Dept.**  
**P.O. Box 7920**  
**Gurnee, IL 60031 USA**

Note: If watch can not be repaired, you may not get your exact watch back, but one of equal or better condition. Please advise if original watch is desired to be worked on and we will attempt to accommodate.



## 7 Original Replacement Bands Available:

Genuine U.S. Patented Bertucci® Watch Bands are available in a variety of materials and design types. For a full array of replacement bands, and for more information go to our web site: bertucciwatchbands.com and use the BAND SELECTOR to see the many options.



Nylon

Leather

Tridura™

Bertucci® Watches feature a quick tool-less band change. Your watch can be fitted with multiple material types & colors.

Case Type:	$\frac{5}{8}$ " - 17mm	$\frac{3}{4}$ " - 19mm	$\frac{7}{8}$ " - 22mm	1" - 26mm
<b>A-3T</b>			●	

See bertucciwatchbands.com for more information

## 9 Battery Information:

Bertucci® Watches use environmentally friendly mercury free batteries. Batteries should be replaced by a professional jeweler or use the Battery & Band™ replacement program listed below... which offers an outstanding value on a new battery & band for your Bertucci® Watch. Do not attempt to remove the case back as it requires special tools and skills. Proper replacement of batteries is critical to ensure the long life of your watch. Actual battery life may vary based on environmental factors, normal battery variance, and usage pattern.

**BATTERY & BAND™ SERVICE:** Please visit our web site bertucciwatches.com for more information and to print form. Send your watch (remove the band) to our service center for battery and o-ring replacement and/or lubrication, clean and test the watch, and send it back to you with the new band of your choice at a special price.

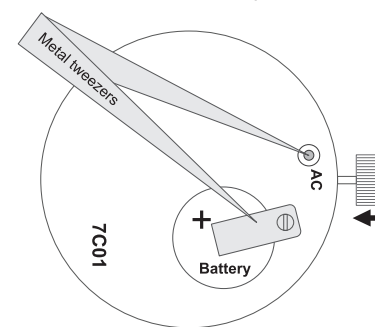


Send the watch for battery to:

**BCS**  
**c/o Battery & Band Dept.**  
**P.O. Box 7920**  
**Gurnee, IL 60031 USA**

NOTE: For Battery Installer

After replacing the battery, connect (AC) gold dot with the top of the battery bridle (+) for 2 seconds. As a result, chrono hands & center second hand will make 360° rotation (crown must be fully pushed in).



## 11 Register Your Watch:

See web site to register your watch for special offers and new product updates.

## 13 Thank You!

Thank you for wearing a Bertucci® Ultimate Field Watch.™ You've made an excellent choice. You'll be pleased with your Bertucci® Watch for years to come. Please retain this manual for future reference.

## 14 Face Every Minute® In The Field With Bertucci®

We would like to hear from you, so please send us your stories, testimonials, adventures, or experiences you've had wearing your Bertucci® Watch.

Please let us know of any questions or comments you may have.

Send to: askenzo@mhbertucci.com



## CONTACT INFORMATION:

@ askenzo@mhbertucci.com

☎ 866-665-7327

🌐 www.bertucciwatches.com

{over} ↻